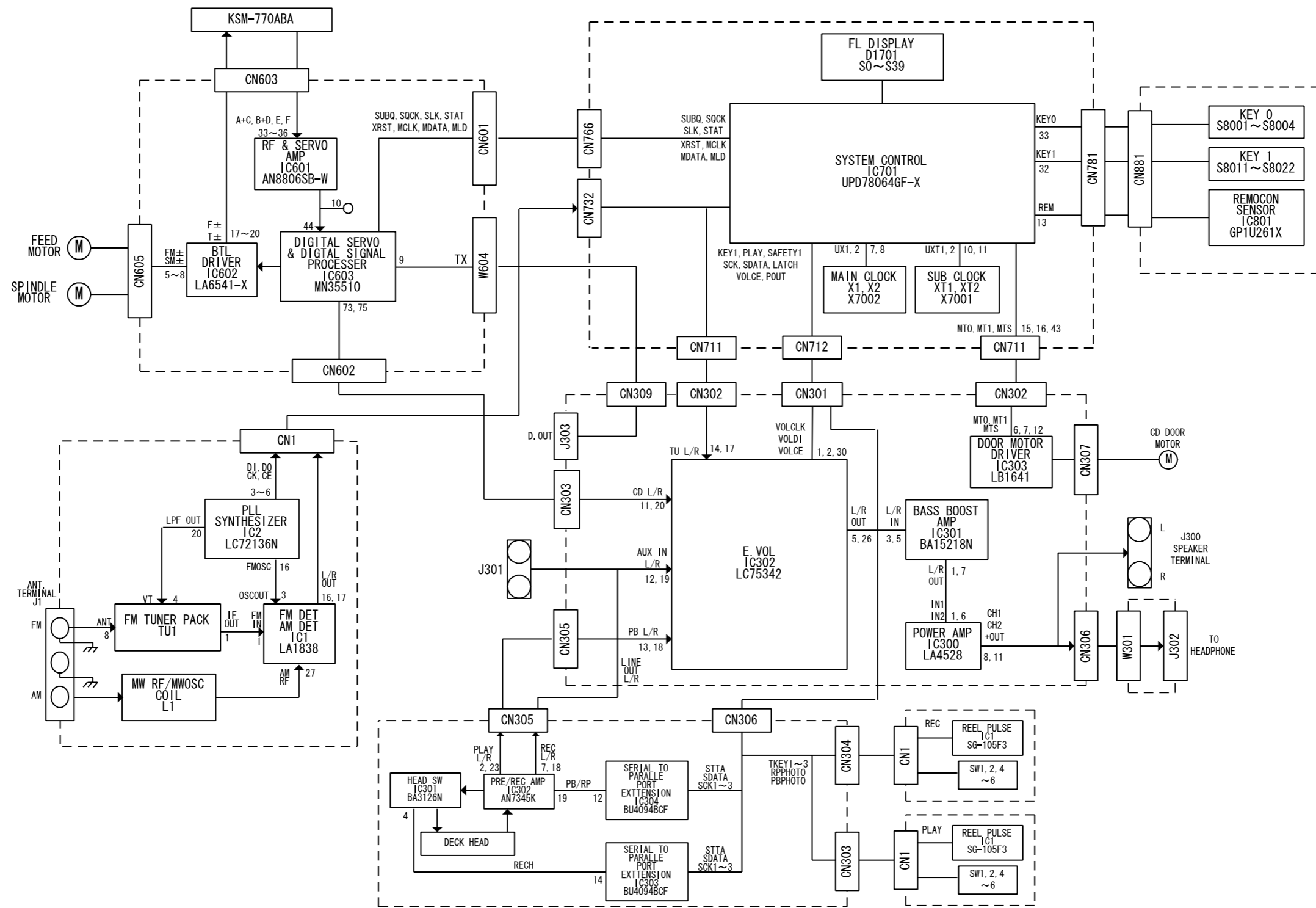
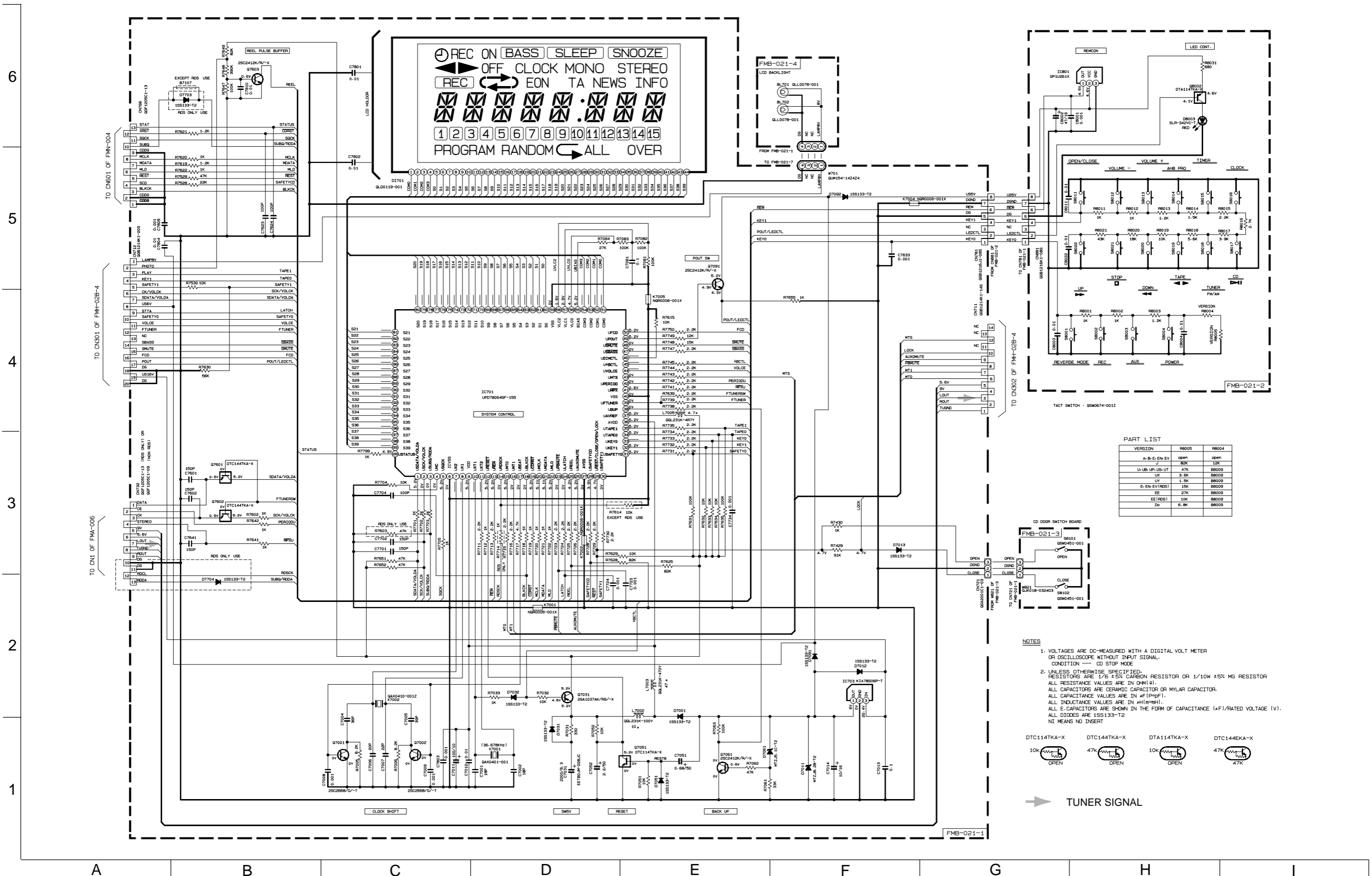


# Block diagram



# Standard schematic diagrams

## ■ CPU & LCD driver circuit (UX-V10)



**PART LIST**

VERSION	R8005	R8004
A-B-E-EN-EV	open	open
J	82K	12K
U-LB-UP-UB-UT	47K	R8009
UX	1K	R8003
UY	1.5K	R8002
E-EN-EV(RDS)	15K	R8009
EE	27K	R8009
EE(RDS)	10K	R8009
Do	6.8K	R8009

- NOTES**
- VOLTAGES ARE DC-MEASURED WITH A DIGITAL VOLT METER OR OSCILLOSCOPE WITHOUT INPUT SIGNAL.  
CONDITION — CD STOP MODE
  - UNLESS OTHERWISE SPECIFIED:  
RESISTORS ARE 1/6 ±5% CARBON RESISTOR OR 1/10W ±5% MG RESISTOR  
ALL RESISTANCE VALUES ARE IN OHM(Ω).  
ALL CAPACITORS ARE CERAMIC CAPACITOR OR MYLAR CAPACITOR.  
ALL CAPACITANCE VALUES ARE IN #F(PPF).  
ALL INDUCTANCE VALUES ARE IN #H(MMH).  
ALL E-CAPACITORS ARE SHOWN IN THE FORM OF CAPACITANCE (#F)/RATED VOLTAGE (V).  
ALL DIODES ARE 1SS133-T2  
NI MEANS NO INSERT



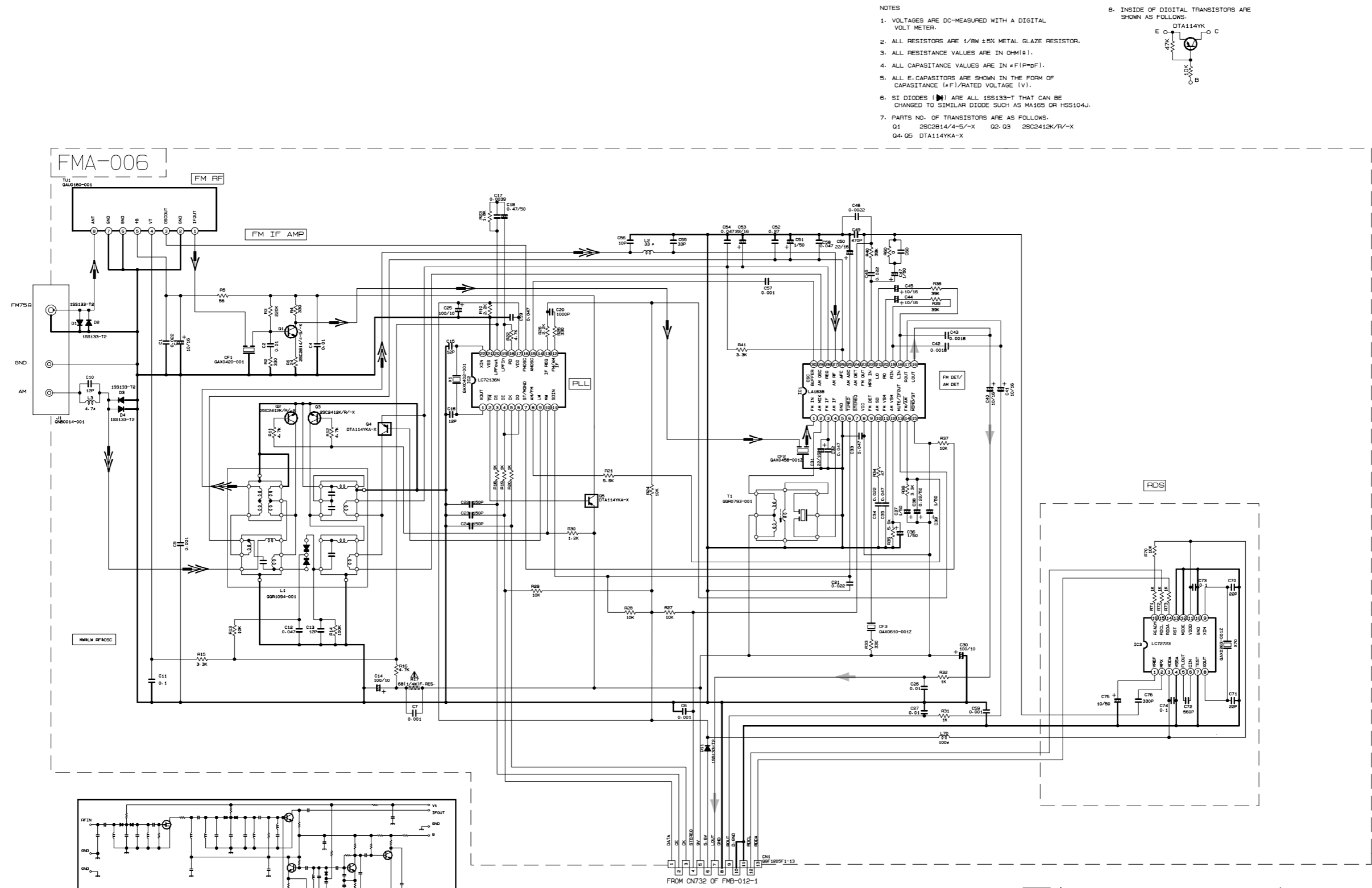
➔ TUNER SIGNAL



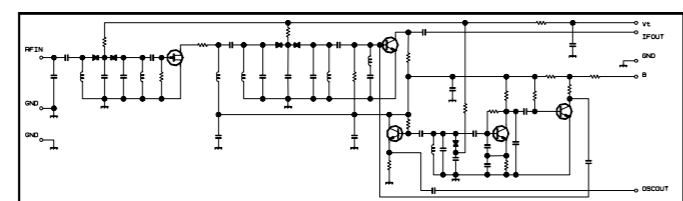
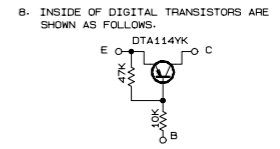


■ Tuner circuit (UX-V10 B/E/EN)

6  
5  
4  
3  
2  
1



- NOTES
1. VOLTAGES ARE DC-MEASURED WITH A DIGITAL VOLT METER.
  2. ALL RESISTORS ARE 1/8W ±5% METAL GLAZE RESISTOR.
  3. ALL RESISTANCE VALUES ARE IN OHM(Ω).
  4. ALL CAPACITANCE VALUES ARE IN pF(p-pF).
  5. ALL E.CAPACITORS ARE SHOWN IN THE FORM OF CAPASITANCE (±F)/RATED VOLTAGE (V).
  6. SI DIODES (⚡) ARE ALL 1SS133-T THAT CAN BE CHANGED TO SIMILAR DIODE SUCH AS MA165 OR HSS104J.
  7. PARTS NO. OF TRANSISTORS ARE AS FOLLOWS:  
Q1 2SC2814/4-5/-X Q2-Q3 2SC2412K/R/-X  
Q4-Q5 DTA114YKA-X



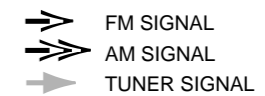
CONDITION	PIN NO.	1	2	3	4	5	6	7	8	9	10	11	12	13	14	15	16	17	18	19	20	21	22	23	24	25	26	27	28	29	30
IC1	FM NO SIGNAL	3.6	8.9	3.6	3.6	0	5.0	5.0	8.9	8.9	1.3	0.1	0	0.9	7.8	7.8	4.3	4.3	4.3	3.4	3.4	2.8	3.4	0	0	3.5	3.5	3.6	3.6	2.7	
IC1	FM 60dB STEREO	3.6	8.9	3.6	3.6	0	5.0	5.0	8.9	8.9	1.3	4.3	0	0.9	7.8	7.8	4.3	4.3	4.3	3.4	3.4	2.8	3.4	0	0	3.6	3.6	3.6	3.6	2.7	
IC1	AM NO SIGNAL	3.5	9.0	3.5	3.5	0	5.0	5.1	9.0	2.6	1.3	0	0	0.9	4.7	5.5	4.3	4.3	4.3	3.3	3.2	2.8	uSt	0.7	0.7	3.6	3.6	3.6	3.6	2.1	
IC2	FM NO SIGNAL	2.5	0	0	5.0	4.9	5.0	7.9	7.8	3.6	6.1	5.1	0	0	0	0	2.5	5.1	0.9	0.9	3.8	0	2.3								

Tr. NO.	Q1	Q5
PIN NO.	E C B E C B	E C B E C B
FM 87.5MHz NO SIGNAL	0 7.1 0.85 8.9 8.8 0	
AM 528kHz NO SIGNAL	0 0 0 9.0 0 8.9	

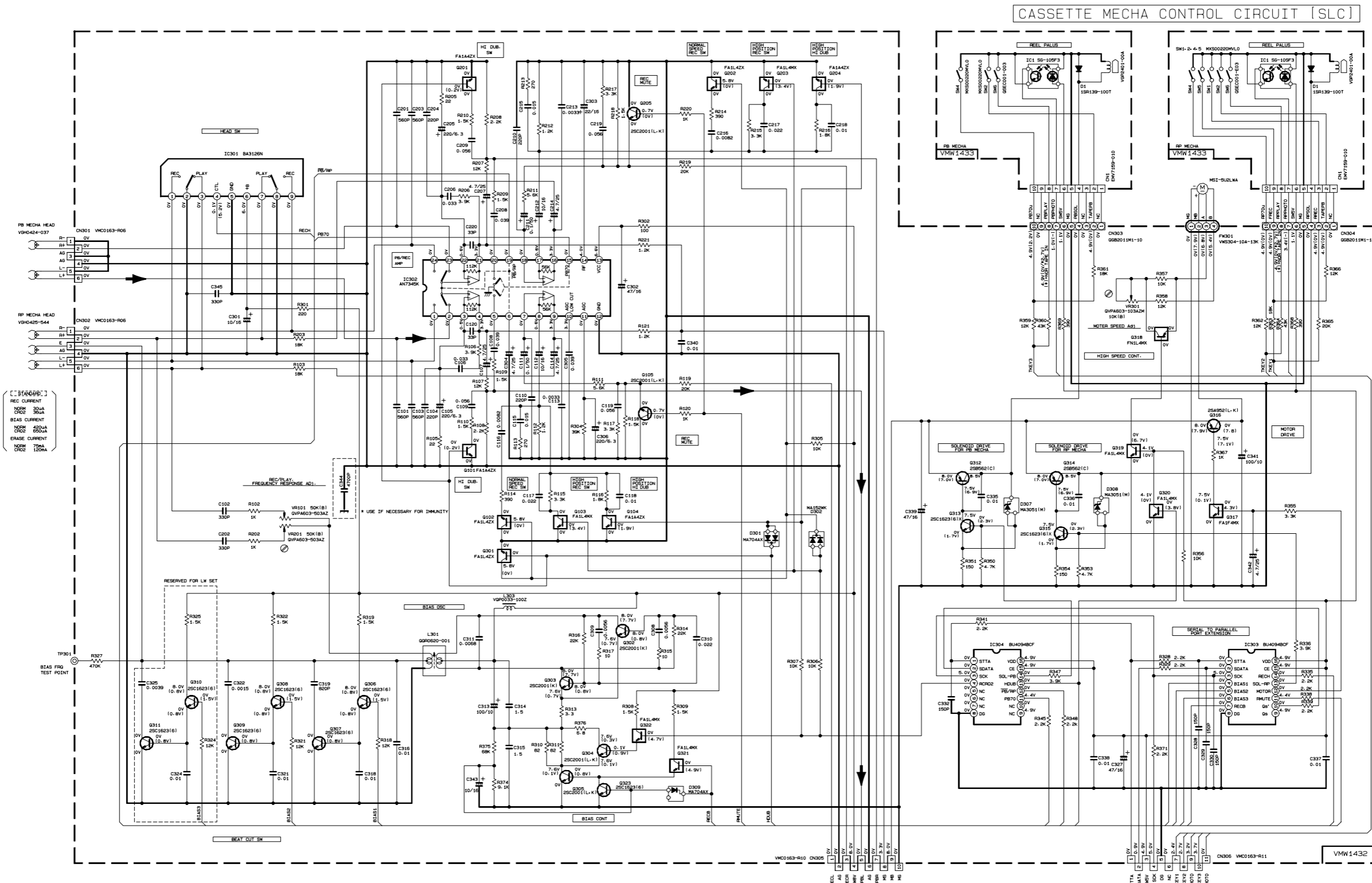
Tr. NO.	Q2	Q3	Q4
PIN NO.	E C B E C B E C B		
AM 528kHz NO SIGNAL	0 0 0.7 0 0 0.7 0 3.6 0.7		
AM 144kHz NO SIGNAL	0 0 0.3 0 0.3 0.3 3.6 3.6 3.6		

⚠ Parts are safety assurance parts. When replacing those parts make sure to use the specified one.



A B C D E F G H I

■ Cassette mecha control circuit (UX-V10)



- [[STANDARD]]  
 REC CURRENT  
 NORM 300A  
 CROD 300A  
 BIAS CURRENT  
 NORM 400A  
 CROD 400A  
 ERASE CURRENT  
 NORM 100A  
 CROD 100A

NOTES  
 1. VOLTAGES ARE DC-MEASURED WITH A DIGITAL VOLT METER OR OSCILLOSCOPE WITHOUT INPUT SIGNAL. ( ) IS INVERT MODE  
 2. UNLESS OTHERWISE SPECIFIED  
 ALL RESISTANCE VALUES ARE IN OHM(Ω).  
 ALL CAPACITORS ARE CERAMIC CAPACITOR  
 ALL CAPACITANCE VALUES ARE IN μF(PF).  
 ALL INDUCTANCE VALUES ARE IN mH(MPH).  
 ALL E. CAPACITORS ARE SHOWN IN THE FORM OF CAPACITANCE (μF)/RATED VOLTAGE (V).  
 PLYPROPYLENE CAPACITOR

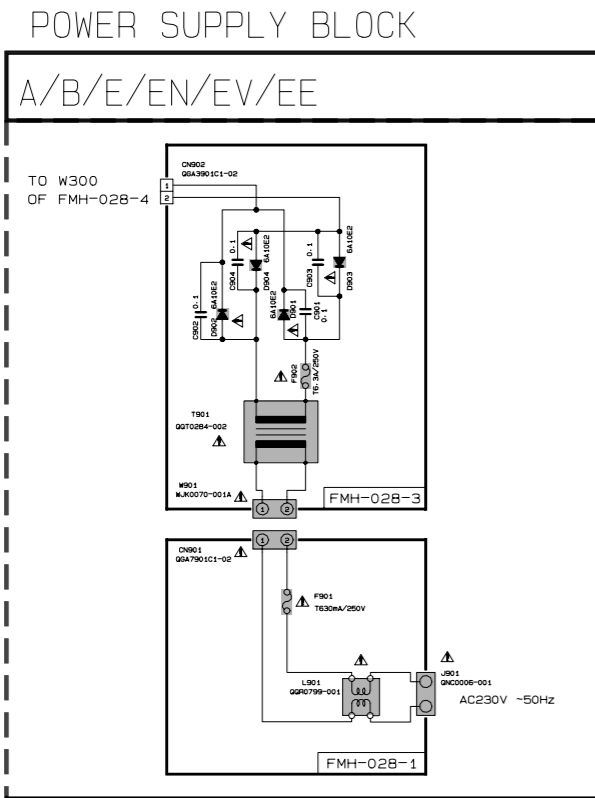
TABLE 1. DIGITAL TR LIST

PART. NO.	CONSTRUCTION	REF. NO.	SYMBOL	REF. NO.
FA142	47K	G318	FA142	G317
FA142	10K	G101/G201	FA142	G103/G203
FA142	47K	G104/G204	FA142	G319
FA142	47K	G102/G202	FA142	G320/G321/G322
		G301		

FROM PRE-AMP CIRCUIT  
 FROM CN305 OF FMH-028-4

FROM MICOM THRU MAIN BOARD  
 FROM CN304 OF FMH-028-4

■ Power supply circuit (UX-V10)



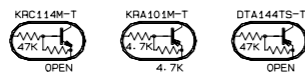
EXPLANATION OF OVERALL OF SCHEMATIC		
MODEL : FS-V10/UX-V10/UX-V20R		
SHEET NUMBER	MODEL NUMBERS TO BE APPLIED	CIRCUITS DESCRIPTION
1/8	FS-V10/UX-V10/UX-V20R	. PRIMARY WITH MAINS TRANSFORMER
2/8	FS-V10/UX-V10/UX-V20R	. DC REGULATORS/AUDIO OUTPUT . EXTERNAL INPUT. SOURCE SELECTOR SWITCH
3/8	FS-V10/UX-V10/UX-V20R	. LCD DISPLAY/SYSTEM CONTROL/USERS KEY CONTROL
4/8	FS-V10/UX-V10/UX-V20R	. CD SERVO AND CD SYSTEM CONTROL . CD CHANGER MECHANISM CONTROL
5/8	FS-V10/UX-V10/UX-V20R	. TAPE DECK MECHANISM CONTROL . TAPE CIRCUITS SUCH AS PRE-AMP AND BIAS
6/8	FS-V10/UX-V10	. TUNER RF/IF/FM MULTIPLEX (ONLY FOR J, C, U, UP, UR, US, UT, UV, UX, UY, A, DDM)
7/8	UX-V10/UX-V20R	. TUNER RF/IF/FM MULTIPLEX (ONLY FOR B, E, EN, EV)
8/8	UX-V10/UX-V20R	. TUNER RF/IF/FM MULTIPLEX (ONLY FOR EE)

NOTE : MARK(\*) IS TO SHOW DEVIATION IN VERSIONS. DETAILS ARE EXPLAINED NEAR MARK.

VERSION CODES	
J	. U. S. A.
B	. U. K.
E	. CONTINENTAL EUROPE
EE	. RUSSIA
EN	. NORDIC COUNTRIES
EV	. EASTERN EUROPE
A	. AUSTRALIA
UP	. KOREA
US	. SINGAPORE
UT	. TAIWAN
UX	. SAUDI ARABIA
UY	. ARGENTINA
UB	. HONG KONG
U	. UNIVERSIAL EXCEPT ALL OF ABOVE

NOTES

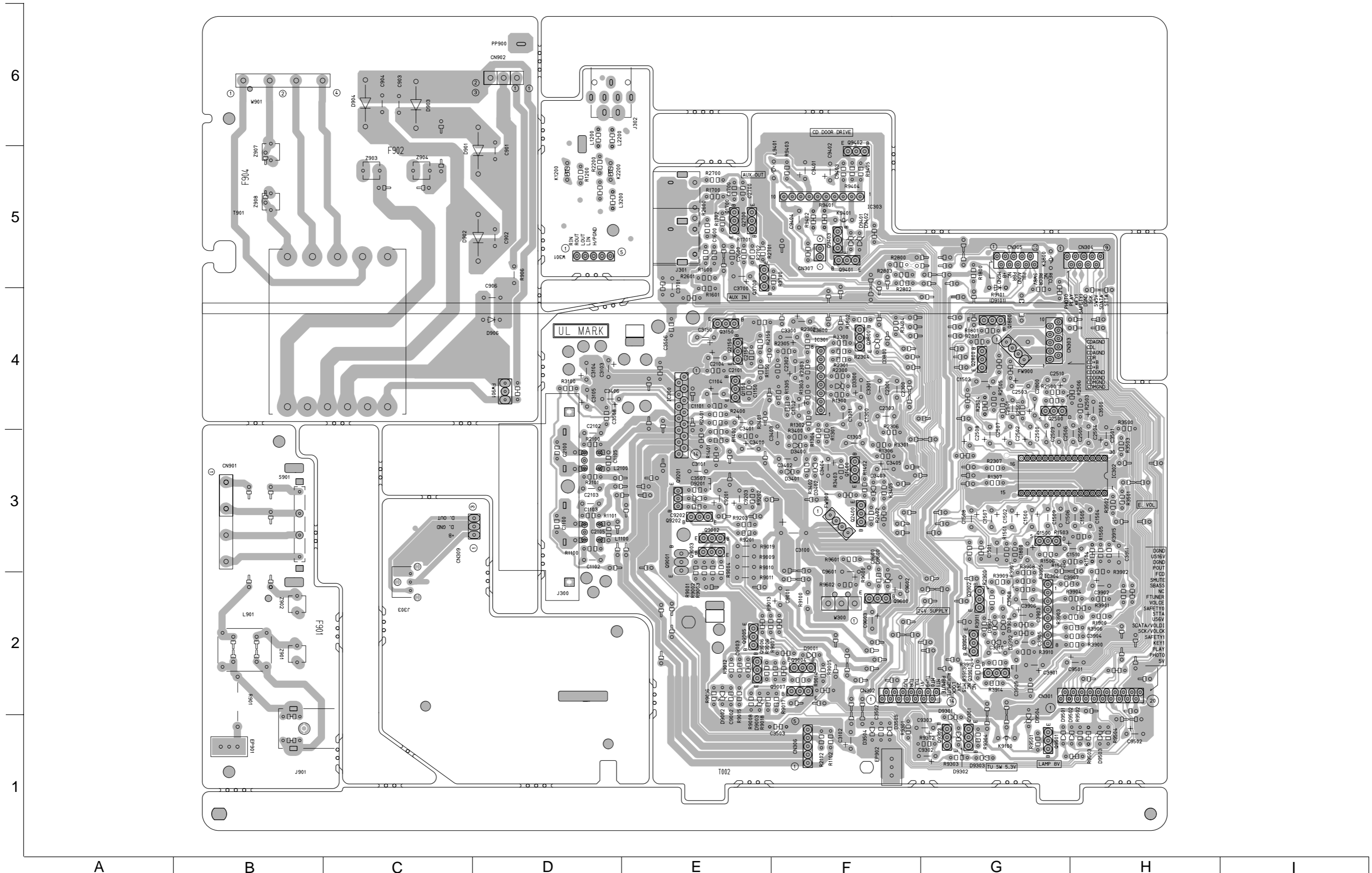
- VOLTAGES ARE DC-MEASURED WITH A DIGITAL VOLT METER OR OSCILLOSCOPE WITHOUT INPUT SIGNAL. CONDITION --- CD STOP MODE INSIDE BRACKET VALUES ARE OTHER FUNCTIONS
- UNLESS OTHERWISE SPECIFIED . RESISTORS ARE 1/6W ±5% CARBON RESISTOR. ALL RESISTANCE VALUES ARE IN OHM(Ω). ALL CAPACITORS ARE CERAMIC CAPACITOR OR MYLAR CAPACITOR. ALL CAPACITANCE VALUES ARE IN #F(#=pF). ALL INDUCTANCE VALUES ARE IN #H(#=mH). ALL E-CAPACITORS ARE SHOWN IN THE FORM OF CAPACITANCE (#F)/RATED VOLTAGE (V). ALL DIODES(Dev. Name : 1SS133-T2)



▲ Parts are safety assurance parts. When replacing those parts make sure to use the specified one.

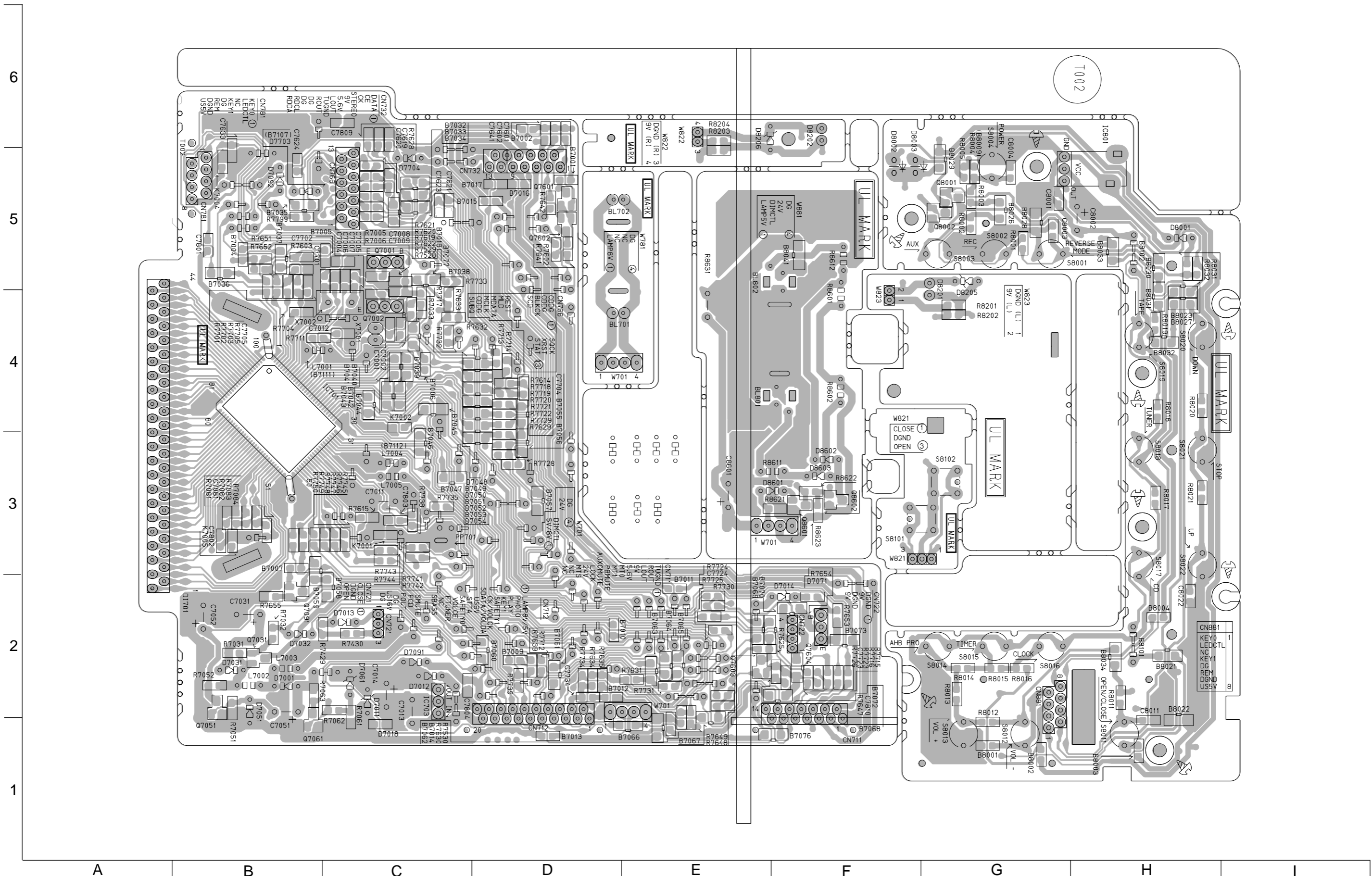
# Printed circuit boards

■ Main board





■ Micon P. C. board







<<MEMO>>